

UPPER LIMB

ESSAY

1. Shoulder Joint (5)

2. Brachial plexus (8)

3. Radial Nerve

4. Mammary gland

SHORT NOTES :

1. RADIAL NERVE
- ✓ 2. DELTOID MUSCLE (5) ✓
3. TRICEPS BRACHII MUSCLE
- ✓ 4. LYMPHATIC DRAINAGE OF MAMMARY GLAND (7) ✓
- ✓ 5. MEDIAN CUBITAL FOSSA (2) - 100 ✓
6. DISTRIBUTION OF ULNAR NERVE IN HAND (or) PALM (2)
7. SUPINATION & PRONATION (2) ✓
8. BICEPS BRACHII MUSCLE (2) ✓
9. ANATOMICAL SNUFF BOX
10. SUPERFICIAL PALMAR ARCH
11. AXILLARY (or) CIRCUMPLEX NERVE (4)
12. FLEXOR RETINACULUM (4) ✓
13. BRACHIAL ARTERY (2) ✓
14. CARPAL TUNNEL SYNDROME (3) ✓
15. PULP SPACE
16. SERRATUS ANTERIOR
- ✓ 17. CUBITAL FOSSA (4) - 100 ✓
18. CLAVIPECTORAL FOSSA FASCIA (2)
19. QUADRANGULAR SPACE
20. EXTENSOR RETINACULUM OF HAND
21. ERB'S PALSY ✓
22. AXILLARY GROUP OF LYMPH NODES
23. AXILLARY ARTERY
24. ANASTOMOSES AROUND SCAPULA

LOWER LIMB

ESSAY

1. HIP JOINT (6)
2. FEMORAL TRIANGLE (2)
3. SCIATIC NERVE (3)

SHORT NOTES

- ✓ 1. DORSALIS PEDIS ARTERY (6) - 397
2. ADDUCTOR MAGNUS
3. GREAT SAPHENOUS VEIN (3) - 458
4. FEMORAL TRIANGLE
5. LIGAMENT (OR) MENESCI OF KNEE JOINT (2)
- ✓ 6. FEMORAL SHEATH (6)
- ✓ 7. POPLITEUS (3) - 414
- ✓ 8. POPLITEAL FOSSA (7) - 370
9. ADDUCTOR CANAL (5)
10. EVERSION & INVERSION OF FOOT (3)
11. DEEP PERONEAL (OR) COMMON PERONEAL NERVE
12. SCIATIC NOTCH
13. DEEP FASCIA & IT'S MODIFICATIONS
14. GLUTEUS MAXIMUS (2) - 356
15. " MEDIUS & MINIMUS
16. MEDIAL LONGITUDINAL ARCH OF FOOT (3)

ABDOMEN

Essay

1. STOMACH (8) ✓
2. UTERUS (5) ✓
3. KIDNEY
4. PORTAL VEIN (3)
5. INGUINAL CANAL (5) ✓
6. PANCREAS (3)

Short Notes

1. INGUINAL CANAL (3) ✓
2. UTERUS (Broad Ligament) (Superior Of Uterus) (3) ✓
3. SUPERIOR MESENTERIC ARTERY (2)
4. INGUINAL LYMPH NODES (2)
5. OPENING OF DIAPHRAGM (2)
6. BRANCHES OF ABDOMINAL AORTA
7. SECOND PART OF DUODENUM (2)
8. SPERMATIC CORD (2)
9. DEVELOPMENT OF PANCREAS (6) ✓
10. PORTAL VEIN
11. SUPERFICIAL PERINEAL POUCH ✓
12. STOMACH BED (9) ✓
13. BARE AREA OF LIVER (2)
14. LYMPHATIC & VENOUS DRAINAGE OF TESTIS

Hcl 2
Hcl 2
15. TRIGONE OF URINARY BLADDER (3)

16. DEVELOPMENT OF LIVER (2)

17. LEVATOR ANI MUSCLE

18. PUDENDAL CANAL (ALLOCK'S CANAL)

19. MECKEL'S DIVERTICULUM (5)

20. VERMIFORM APPENDIX (4)

21. DEVELOPMENT OF DIAPHRAGM & IT'S ANOMALIES

22. PERINEAL MEMBRANE (3)

23. VISCERAL SURFACE OF SPLEEN (3)

24. INGUINAL HERNIA (3)

25. SUPRARENAL GLAND (2)

26. INTERIOR OF ANAL CANAL (3)

27. RECTUS SHEATH ✓

28. COELIC TRUNK

29. Pelvic body 231 ✓

THORAX

ESSAY

1. Intercostal Space *
2. Right atrium * * * * *
3. Coronary artery * *
4. Bronchopulmonary segment *
5. Heart blood supply * * * *
6. Arch of Aorta
7. Heart
8. Right Lung

SHORT NOTES

1. Diaphragm
2. Azygos vein
3. Sternal angle
4. Thoracic duct
5. Mediastinum
6. Hilum / Root of right lung
7. Ligamentum arteriosum
8. Bronchopulmonary segment ★★★★★★
9. Thoracic duct
10. Typical intercostal nerve ★★
11. Right atrium + development ★★
12. Transverse sinus of pericardium *
13. Pleural recesses ★★
14. Eustachian tube
15. Coronary sinus

16. Sternal angle ★
17. Ludwig's angina
18. Internal mammary artery / Internal thoracic a
19. Inferior constrictor of pharynx
20. Arterial supply of heart (Rt. coronary artery)
21. Anterior of right atrium ★★
22. Intercostal muscles ★
23. Arch of Aorta, relations, development
24. SVC
25. Development of interatrial septum
26. Pericardium
27. Azygos vein ★★
28. Superior mediastinum ★
29. Venous drainage of heart
30. Mediastinal surface of lungs.

HEAD & NECK

ESSAY :-

1. Thyroid gland - gross, histology, development, blood supply, applied anatomy. ★ ★ ★ ★ ★
2. Tongue - External features, muscle, nerve, development, applied anatomy. ★ ★ ★ ★ ★
3. Posterior Triangle - Boundaries + contents. ★
4. Classify dural venous sinus. Describe position, relations, tributaries, A.A of cavernous sinus ★ ★ ★ ★ ★
5. Parotid gland, parotid duct ★ ★ ★
6. Name muscle of mastication + describe. Add note on Pterygoid venous plexus.
7. Middle Ear cavity - Boundaries, content, features of medial Canal, blood supply.

SHORT NOTES

1. Middle Meatus of nose ★
2. ~~Layers of~~ Scalp + A.A ★ ★
3. Carotid Sheath ★ ★ ★ ★ ★
4. Innervation & development of tongue
5. Buccinator muscle ★
6. Parotid duct - ★
7. Sternocleidomastoid ★ ★ ★
8. Facial Artery + Branches ★ ★ ★
9. Temporalis
10. External Jugular vein ★ ★
11. Nasal Septum ★ ★ ★
12. Vocal cord + movement
13. Maxillary artery ★
14. Hyoglossus muscle ★
15. Blood supply of thyroid gland ★ ★ ★
16. Lateral wall of middle ear
17. Ciliary ganglion

- 18. Otic ganglion
- 19. Orbicularis oculi *
- 20. Styloid process
- 21. Dangerous area of face
- 22. Arteria cervicalis *
- 23. Maxillary air sinus
- 24. Lateral wall of nasal cavity [nasal] - *
- 25. Extrinsic muscles of tongue
- 26. Nerve supply + development of tongue - *
- 27. Soft palate *
- 28. Structures within parotid gland *
- 29. Palatine tonsil + relations *
- 30. Cavernous sinus *
- 31. Cavity of interior of larynx
- 32. Waldeyer's ring
- 33. Pharyngeal muscles
- 34. Submandibular ganglion

- 35. Extraocular muscles - *
- 36. Muscles of mastication
- 37. Carotid triangle
- 38. Medial wall of middle ear
- 39. Facial nerve in face
- 40. Auditory tube
- 41. Trochlear nerve
- 42. Relations of cavernous sinus

BRAIN

SHORT NOTES

ESSAY

1. Classify white matter of cerebellum. Describe internal capsule under (a) parts (b) fibres present (c) Blood supply (d) A.A -
2. Extent, covering, blood supply, ascending, descending tracts of spinal cord with cross sectional diagrams. *

1. Floor of IVth Ventricle | Rhomboid fossa *****
2. Circle of Willis *****
3. Anterpeduncular fossa
4. Corpus striatum
5. 3rd Ventricle
6. Corpus callosum * * * * *
7. Medial Lemniscus
8. Inferior cerebellar peduncle
9. C S F
10. Substantia nigra
11. Visual pathway
12. Blood supply of spinal cord *
13. Basilar artery
14. Functional area in superolateral surface of cerebrum with diagram. **
15. Cross sectional diagram of level of sup. colliculus *
16. Sulci & gyri of superolateral surface of cerebrum.

17. Internal capsule. * * *
18. Pyramidal tract.
19. Brain stem.
20. T.S of medulla oblongata at level of pyramidal decussation.
21. Microscopic structure of hypophysis cerebri.
22. Infratemporal fossa.
23. Middle meningeal artery.
24. Tentorium cerebelli.

SHORT ESSAYS

3. **Derivatives of first pharyngeal arch- nerve supply, skeletal and muscular derivatives**
Refer Question No. 7, April 2006 (RS2), Paper I
4. **Brachial artery- extent, course and relations, branches**
Refer Question No. 10, October 2006 (RS2), Paper I
5. **Microscopic anatomy of pituitary gland- labelled diagram only**
Refer Question No. 12, April 2010 (RS2), Paper I
6. **Supination and pronation- definition, joints involved and muscles causing the movements**
Refer Question No. 9, April 2009 (RS2), Paper I
7. **Cauda equina- definition, extent and constituent fibres.**
Cauda equina is the terminal part of the spinal cord formed by the roots of the spinal nerve. It is so called because of its resemblance of the tail of a horse.

Cauda equina extends from the L₁ vertebrae to the end of the sacral canal.

Constituent fibers: The cauda equina contains the roots of the lower four pairs of lumbar, five pairs of sacral and one pair of coccygeal nerves.

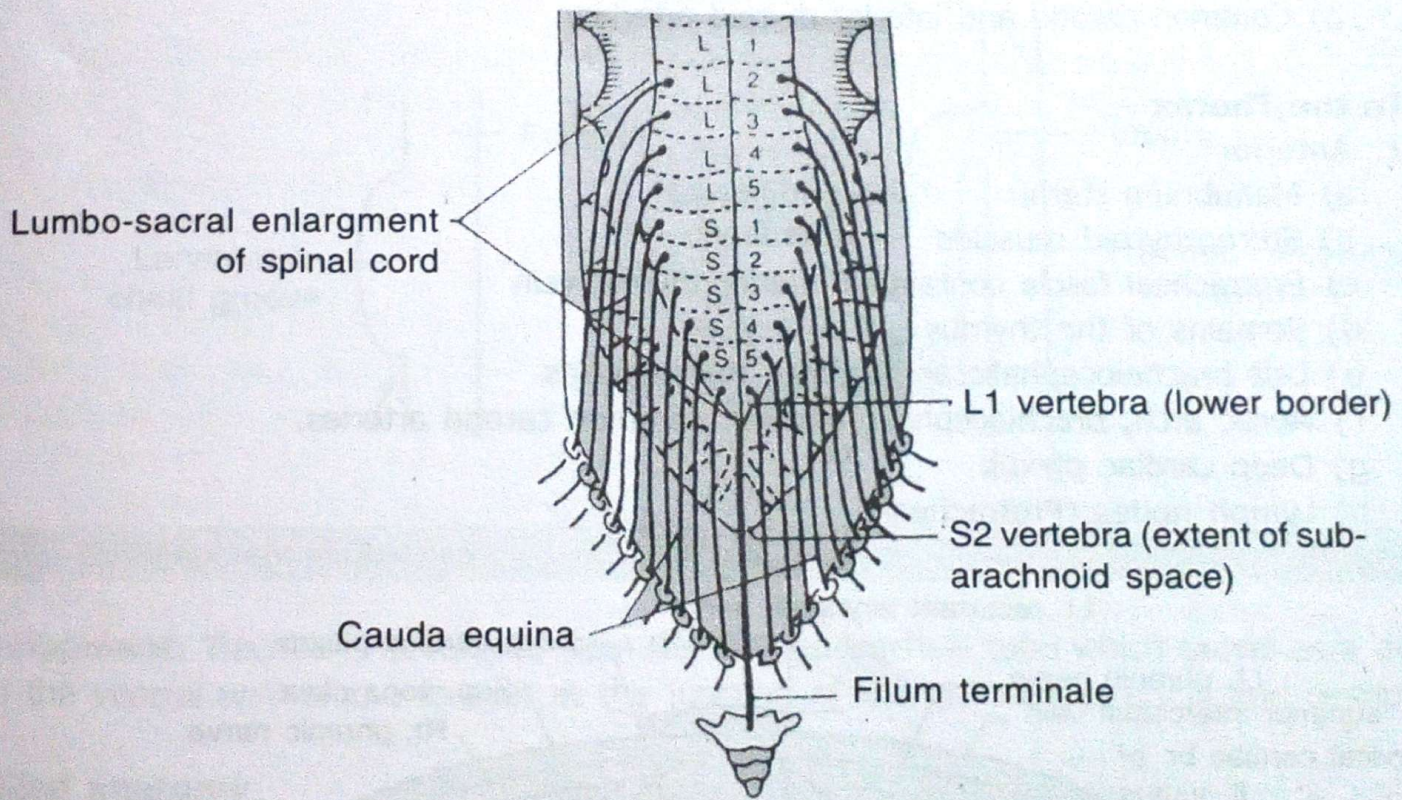


Fig. 5 Cauda equina